

MAGNETIC



DAVID HOLBERT
RB 240 PG 308
TM# 14.00-01-08

MASTHOPE MT. COMMUNITES POA
RB 824 PG 232/25
TM# 14.00-01-07

MASTHOPE PLANK ROAD SR 1014

DRIVEWAY
#04056669
PERMIT

4.60 ACRES +/- TOTAL

LOT 4

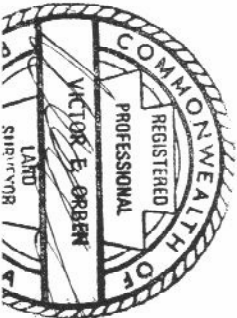
LOT 3

LOT 2

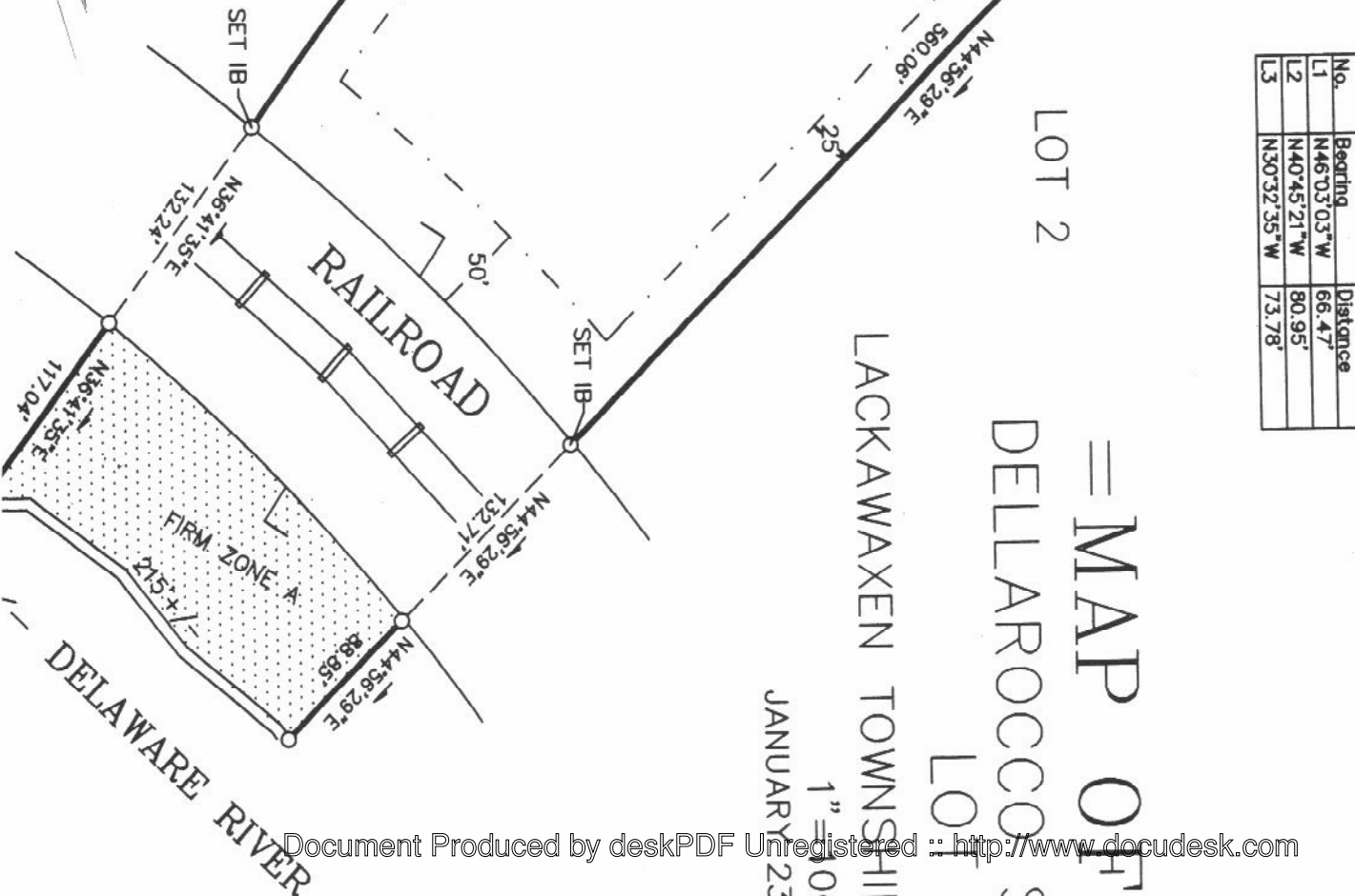
No.	Bearing	Distance
L1	N46°03'03"W	66.47'
L2	N40°45'21"W	80.95'
L3	N30°32'35"W	73.78'

PROPOSED
WELL (W)

#2
0.00
0.00
0.00



VICTOR E. ORBEN
PROFESSIONAL LAND SURVEYOR
MILL FORD PA 18337



DELLAROCCH
LACKAWAXEN TOWNSHIP
JANUARY 23 2008
1" = 100'